



WWW.MUSEDESIGN.IE

DESIGN SERVICE GUIDE

2024



WWW.MUSEDESIGN.IE

INTERIOR DESIGN CONSULTANT AND KITCHEN DESIGN SPECIALIST





WWW.MUSEDESIGN.IE



SPECIALIST DESIGN

Kitchen & Bathroom Design

INTERIOR DESIGN

Single Rooms & Open Plan Rooms

VIRTUAL DESIGN

Space Planning & Interior Rendering

Storage & Joinery Design

NEW BUILDS & RENOVATIONS

First Fix Preparation & Key Room Design

DESIGNER BY YOUR SIDE

Retain a block of time with us to use in the areas of your project you need the most help.

WHO WE ARE

Welcome to Muse Design. I am Shauna Heslin, a Specialist Multidiscipline Designer with over 20 years experience in the industry.

I graduated as a Rhodex International accredited Interior Designer in 2004 and founded Muse Design in 2014. I have extensive experience in all aspects of bespoke kitchens, fitted furniture design and interior design companies.

As a freelance designer I am not tied to any individual company or its products. I always give a detailed, independent unbiased opinion on what will work best in your space and for your needs.

WHAT WE DO

We will create a design to not only improve the flow of your workspace, but to maximise on storage and finished in a look to reflect your individual style preferences.

We spend 2-3 weeks researching concepts and perfecting your custom design.

No two projects are ever considered the same, and we believe it's vital to take the time to really bring your dream home to life.

HOW WE WORK

As a Specialist Design Consultancy, we combine our extensive experience in interior and bespoke furniture design to create the perfect layout, aesthetic and function to suit your space.

We offer **Full Service Design** for Kitchens, Bathrooms and every other room in your home. We have broken the process into stages, so you can choose how much or as little creative input you would like us to have.

We can work with you virtually on any room in your home in our **Space Planning & Interior Rendering** or our **Storage & Joinery Design** service.

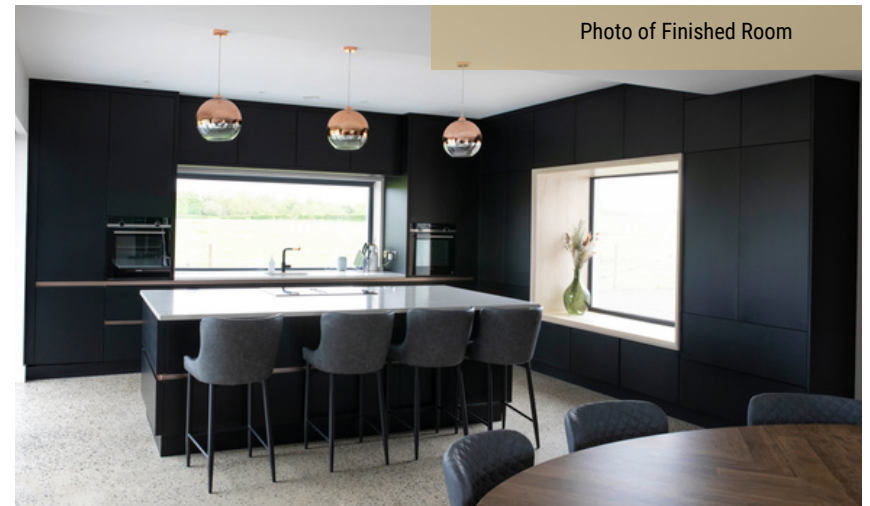
For **New Builds and Larger Renovation** projects, we have broken the process into two phases, to help you to prepare for the first fix, then we can focus on the key rooms in your home that you would like to have professionally completed before you move in.

.Our **Designer By Your Side** Service is a means of working with a professional on the areas of your project where you need some guidance to make the right decisions for the design elements or room layouts for your new space.

[CLICK HERE TO SEE OUR RECENT PROJECTS ON OUR WESITE](#)



WWW.MUSEDESIGN.IE





WWW.MUSEDESIGN.IE



We want you to have total visibility about your project costs so you can budget accordingly.

We work on a fixed design fee based on the size and scope of your project, with time allocated for meetings and revisions.

Additional hours can be added on to each stage if you require more time. We will let you know when you are at the end of your agreed service.

Each stage of the process is paid in advance. You will be given the option to move to the next phase of your project with us, should you wish to have more assistance.

We begin with a face to face meeting which usually takes about two hours to discuss wish lists, layouts, materials, budgets and timeline. We will conduct a site measure to get the exact dimensions of your room/s. We will use the floor plans if we are designing for a new build.



WWW.MUSEDESIGN.IE

FULL SERVICE DESIGN PHASES

We begin with a face to face meeting which usually takes about two hours to discuss wish lists, layouts, materials, budgets and timeline. We will conduct a site measure to get the exact dimensions of your room/s. We will use the floor plans if we are designing for a new build.





WWW.MUSEDESIGN.IE

PHASE 1: Concept Design & Development

Space planning and development of design concepts for the layout, interior design and finishes of the kitchen, present suggestions for the products, fixtures and fittings, utilising concept boards and physical samples (where possible).

We will ask for your feedback on each feature of the initial design – what will and what won't work, what colours to use to tie together the whole design. You will have a few days to sit with the design and make any changes you want. One revision to the initial design is included (we will amend the plan once with as many changes as you require).

Once we have agreed on the functional layout, we then focus on the finishes. You will be invited to join our online portal where you will have access to the pinboards of the materials and finishes we recommend for your space. We will then meet with you to view samples and agree colours and finishes for all aspects of the design such as door styles and colours, furniture suggestions and window treatments.

We will then provide you with the material and finishes schedule with clickable links to bring you to more information on each product and finish and make purchases where necessary.



WWW.MUSEDESIGN.IE

PHASE 2: Design Documentation

Once the design concept has been pinned down, it is ready to be given to your builder or trades of choice. All purchases for your kitchen are direct from the manufacturers. We can take the stress out of the pricing process by sending the design to our recommended craftsmen to quote the project. We will liaise with the manufacturers and installers to provide you with a breakdown of costs for each of the items in our proposed design.

When your contractor has measured the areas, they will need some technical drawings to ensure they get every detail exactly right. We will adjust the designs to suit any alterations and create the final production drawings. These drawings will detail every element of your design and will be sent to you for your approval.





WWW.MUSEDESIGN.IE

PHASE 3: Design Management

While we do not provide general contracting services, we will happily refer trade professionals that we have worked with in the past. The decision to hire any contractor will be entirely yours, even the ones we refer.

While the project is underway, we will carry out site visits and work closely with trades to ensure the implementation of our design. This usually means that we are meeting with the builders, kitchen suppliers and other contractors (electricians, painters, tilers) that you hired to check on progress at regular intervals throughout the installation.

Please be aware that this is not a project management role. Design management involves monitor design intent, progress and to address issues as they arise.





WWW.MUSEDESIGN.IE

PHASE 4: Furnishing and Installation

We will assist you with the sourcing of furniture, fixtures and equipment to complete your space, such as seating, tables, rugs, accessories and window treatments. Ideally, this phase is undertaken concurrently with Phase 1 to ensure a cohesive design.

KITCHEN DESIGN

When it comes to kitchen design, there are hundreds of little things to consider. From storage organisation and materials selection to appliance and mechanisms specifications. It could be quite overwhelming and we get that. That is why we developed a system of questions that helps us to understand your lifestyle and unique needs to deliver the kitchen that is perfect for you.



KITCHEN DESIGN FEE STRUCTURE

DESIGN CONSULTATION: Including Survey	€450
PHASE ONE: Concept Design & Development	€1050
PHASE TWO: Design Documentation	€700
PHASE THREE: Design Management	€800
PHASE FOUR: Furnishing & Installation	€600
ADD ON Utility Room, Mud Room or Boot Room	€300

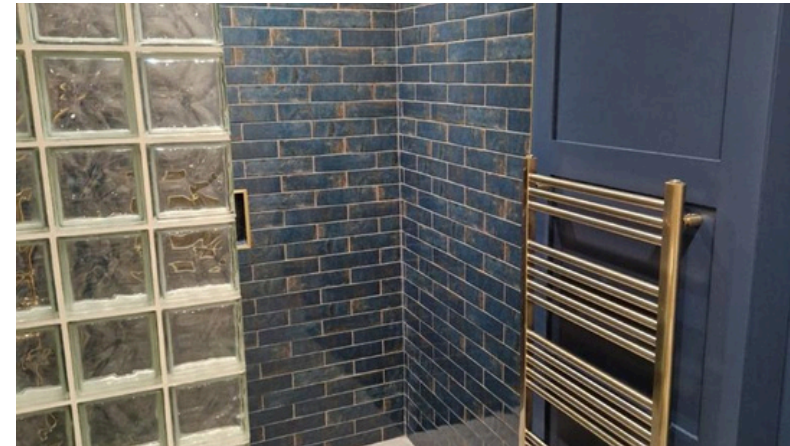
Every project starts with a Design Consultation

[BOOK NOW](#)

[Open plan rooms are extra, click here for more information.](#)

BATHROOM DESIGN

We believe a successful bathroom project needs to be not only functional but also a beautiful space for relaxation. We can work with any layout, no matter how intricate or complicated. Selecting the right materials combined with clever storage solutions, we create unique bathrooms that are long lasting, allowing you to enjoy on a daily basis for many years to come.



BATHROOM DESIGN FEE STRUCTURE

DESIGN CONSULTATION: Including Survey	€450
PHASE ONE: Concept Design & Development	€950
PHASE TWO: Design Documentation	€650
PHASE THREE: Design Management	€600
ADD ON Ensuite or Powder Room	€300

Every project starts with a Design Consultation

[BOOK NOW](#)

ROOM DESIGN

Following our consultation, we will create a functional design based on your unique preferences. Your room design will include a furniture layout plan, along with the free-standing furniture specifications and our suggested floor and wall finishes, window treatments and accessories.

You will receive a complete Design Plan for your project without committing to purchasing the furnishings through us. We will provide you with samples of the suggested finishes and your own personal link to your proposed schedule that includes links to the suppliers' websites.



ROOM DESIGN FEE STRUCTURE

DESIGN CONSULTATION: Including Survey	€450
PHASE ONE: Concept Design & Development	€650
PHASE TWO: Design Documentation	€600
PHASE THREE: Design Management	€800
PHASE FOUR: Furnishing & Installation	€600
ADD ON Bespoke Furniture Design	€300

Every project starts with a Design Consultation

[BOOK NOW](#)

Open plan rooms are extra, click here for more information.



WWW.MUSEDISEN.IE

VIRTUAL DESIGN

We are located in the Leinster region but we also provide design services if you live outside of this area through our Virtual Design Service.

Your bespoke furniture design will not only maximise your storage space, but we will select the door style and handle, finishes, decorative features and lighting to make sure you get the right storage solution that will enhance the aesthetic of your new room scheme.

SPACE PLANNING & INTERIOR RENDERING

Our Virtual Space Planning & Interior Rendering Service is a great way to enlist the help of an experienced Interior Designer to achieve a beautiful and professionally designed space that you execute to completion.

We will send you Design Style Assessment to establish your brief. You will be able to upload your site measurements or architect's floor plans, photographs of the room or architect's elevations.

You will also be able to supply us with photographs and measurements of any furniture or pieces you would like to include in the new design, and inspiration photos of the design direction you would like to consider for your project.

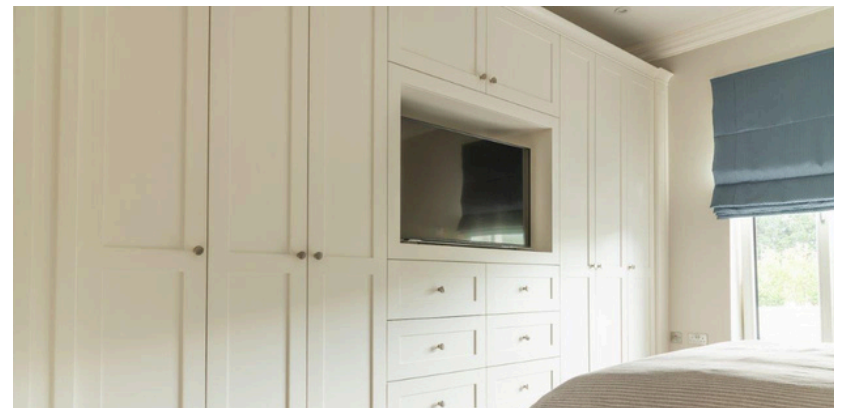


STORAGE & JOINERY DESIGN

Bespoke furniture can add a touch of uniqueness and personality to your living space, with storage solutions that are tailored to your specific needs and preferences.

Custom built units can be designed to fit your specific space perfectly, ensuring that you are utilising every inch of the area. This is particularly useful for alcoves that are often irregularly shaped and can be challenging to find a suitable pre-built unit.

Another benefit of custom units is that they can be designed to match the decor of your room. You can choose the materials, colour, and style of the unit to match your existing furniture and create a cohesive look. This can be particularly advantageous if you have a specific theme or style that you are trying to achieve in your room.





SPACE PLANNING & INTERIOR RENDERING

KITCHEN	€450	PURCHASE
OPEN PLAN KITCHEN	€575	PURCHASE
UTILITY ROOM, MUD ROOM, BOOTROOM	€250	PURCHASE
BATHROOM, ENSUITE, POWDER ROOM	€300	PURCHASE
SINGLE ROOM	€250	PURCHASE
OPEN PLAN ROOM	€300	PURCHASE



STORAGE & JOINERY DESIGN

WARDROBES	€195	PURCHASE
ALCOVES, MEDIA UNITS	€195	PURCHASE

ALL PRICES ABOVE ARE PER ROOM AND INCLUDE VAT AT 23%.

DISCOUNTS ARE AVAILABLE FOR MULTIPLE ROOMS.

OTHER BESPOKE FURNITURE PIECES ARE CHARGED AT €150 PER HOUR.

NO MEETINGS OR SITE VISITS ARE INCLUDED IN ANY COSTS ABOVE.

WE WILL BEGIN THE PROCESS WHEN WE RECEIVE YOUR MEASUREMENTS & BRIEF.

NEW BUILDS & LARGE RENOVATIONS

Building a home from the ground up is one of the most exciting journeys you will ever undertake. Every aspect should be thoughtfully planned for both functionality and style.

As a professional designer, I will guide you throughout the process, from recommendations on your floor plans to sourcing your final selections and finishes, I will assist you in achieving a cohesive look that accurately reflects your personality.

We have broken the process into two phases - Phase One is to help you to prepare for the first fix on site so you can avoid making costly mistakes in the initial room layouts. Phase Two focuses on the detailed designs of the key rooms in your home that you would like to have professionally completed before you move in.



Fees are based on scope of project.

PHASE ONE: First Fix Preparation *Starting from €2,750*

PHASE TWO: Key Room Design *Starting from €4,750*

Every project starts with a Design Consultation

[BOOK NOW](#)

DESIGNER BY YOUR SIDE

Our Designer By Your Side Service is a means of working with a professional on the areas of your project where you need some guidance to make the right decisions for the design elements or room layouts for your new space. Following a consultation, we will collaborate with you on where the hours are spent, so we can prioritise your project list and work off the hours purchased in the areas you need assistance.

Additional hours can be purchased as your project progresses and you can choose this option as an add-on to the New Builds and Renovations service if you would like to spread the hours between smaller details in different rooms – such as the window treatment in a particular bedroom, or the lighting suggestions for a dining room.

DESIGNER BY YOUR SIDE FEE STRUCTURE

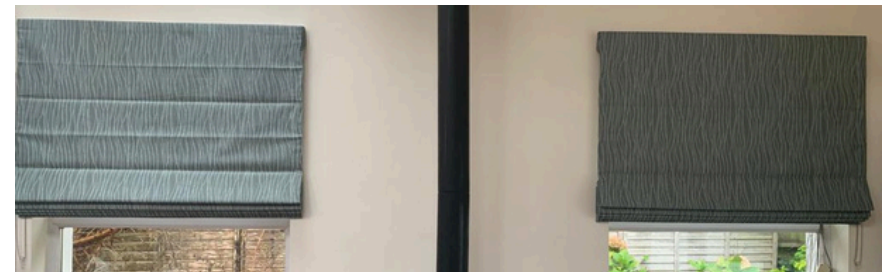
30 HOURS OF ADVICE	€3.750
10 HOUR TOP UP	€1.250

Every project starts with a Design Consultation

[BOOK NOW](#)

30 HOURS OF ADVICE

We work closely with you throughout your project to answer design questions, provide guidance, advice and expertise on the areas you need the most help, from space planning to kitchen and bathroom design or pulling a scheme together. The service is valid for six months from time of purchase and we will update you fortnightly on the time used.



10 HOUR TOP UP

Additional hours can be added in 10 hour increments if you are undertaking a large renovation, are finding the project overwhelming and want to increase our scope of work. In our fortnightly briefing, we will let you know how much time is remaining and give you the option to add additional design support time as the project progresses. As with the initial 30 hours purchased, the additional hours are valid for six months from time of purchase.



MUSE DESIGN

www.musedesign.ie



PHONE

087 718 0023



EMAIL

shauna@musedesign.ie

Due to the nature of our daily work, we may not be accessible immediately by phone call.

For this reason, text messages and Whatsapp messages are our preferred method of contact.

Any queries related to a current project can be logged in your Client Dashboard for audit trail purposes.



OFFICE HOURS

Mon - Fri: 10am - 5pm

Our office hours are Monday to Friday 10am - 5pm.

Evening and weekend appointments are available on request and are subject to an additional charge.